

1981 McGill College Avenue

Location

1981 McGill College Avenue
Montreal, Canada

Building Size

636,753 SF
21 Floors
Typical Floor 35,454 SF

Role

Property Owner
Property Development
Design and Construction
Property Management

Building Status

Sold in 1991

Overview

Developed and built by LDPG, 1981 McGill College Avenue opened in 1981. It is composed of joined towers rising 16 and 21 stories for a total of 636,753 square feet. The terraced plaza with a monumental sculpture by Raymond Mason leads to a spacious 37-foot high lobby with granite and stainless steel finishes. With its distinguished architecture, quality materials and unique configuration, the building is a commanding presence on McGill College Avenue, a tree-lined boulevard leading from McGill University to Place Ville-Marie.

Building Features

Corporate tenants requiring large one-level floor area can extend into both towers for 36,000 square feet. Similar full-floor identity and privacy can be provided for half-floor users of 18,000 square feet who can have completely separate services and elevator lobbies.

Owner and Developer

Louis Dreyfus Properties has developed, acquired and managed first-class office buildings in North America and Europe for over 35 years. Its portfolio consists primarily of high quality office buildings in central business districts and major urban locations, which have included New York City; Fairfield and Westchester Counties; Washington, DC; Miami; Chicago; Portland, Oregon; Montreal; Toronto; Paris and London.

Architect

The Webb Zerafa Menkes Housden Partnership



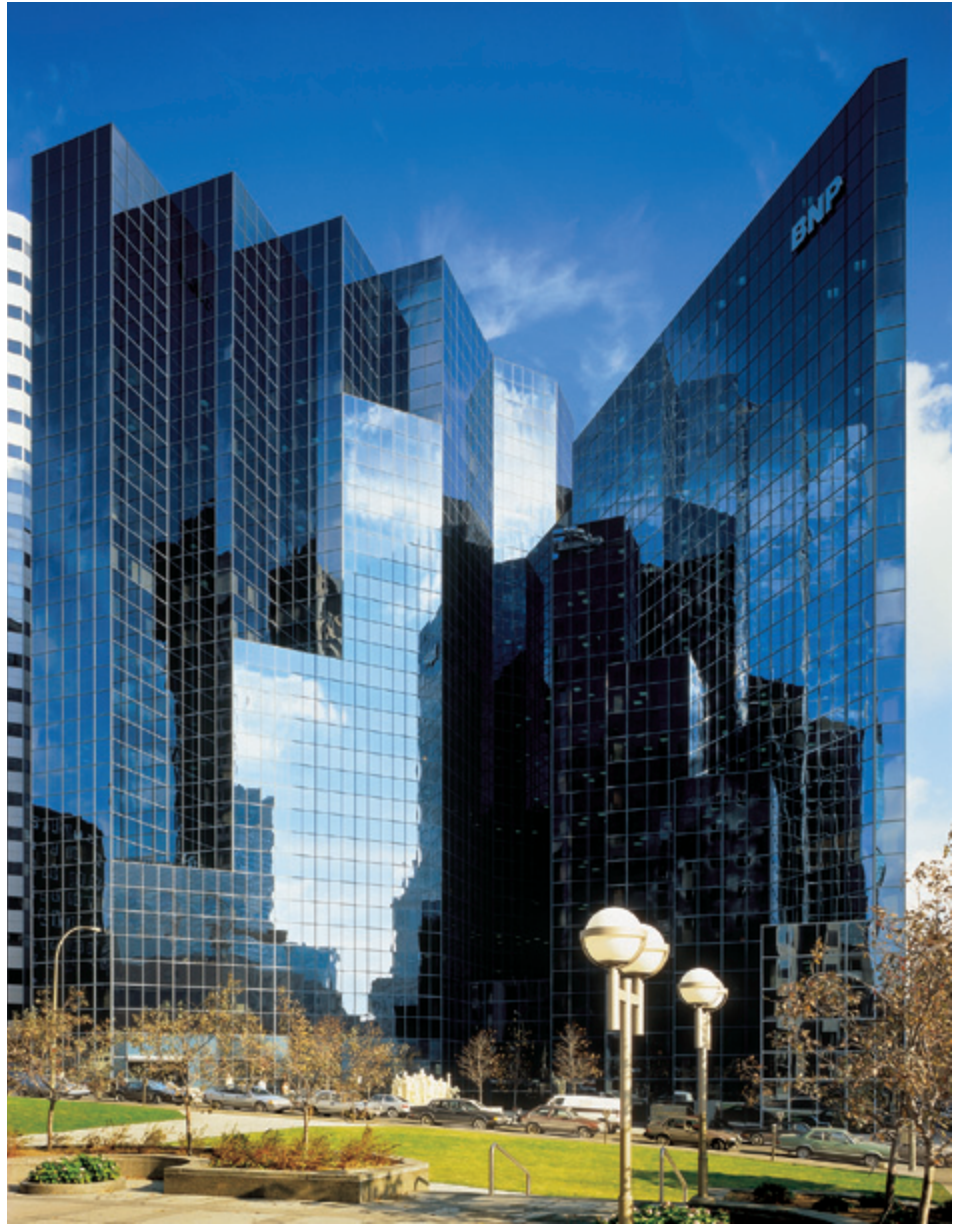
Property Group Partners
609 Fifth Avenue Floor 6
New York, New York
10017-1021

T 202 490-2626
F 202 490-1060

Property Group Partners
1101 New York Avenue Floor 9
Washington DC
20006-3717

T 202 470-4900
F 202 470-4889

1981 McGill College Avenue



Property Group Partners
609 Fifth Avenue Floor 6
New York, New York
10017-1021

T 202 490-2626
F 202 490-1060

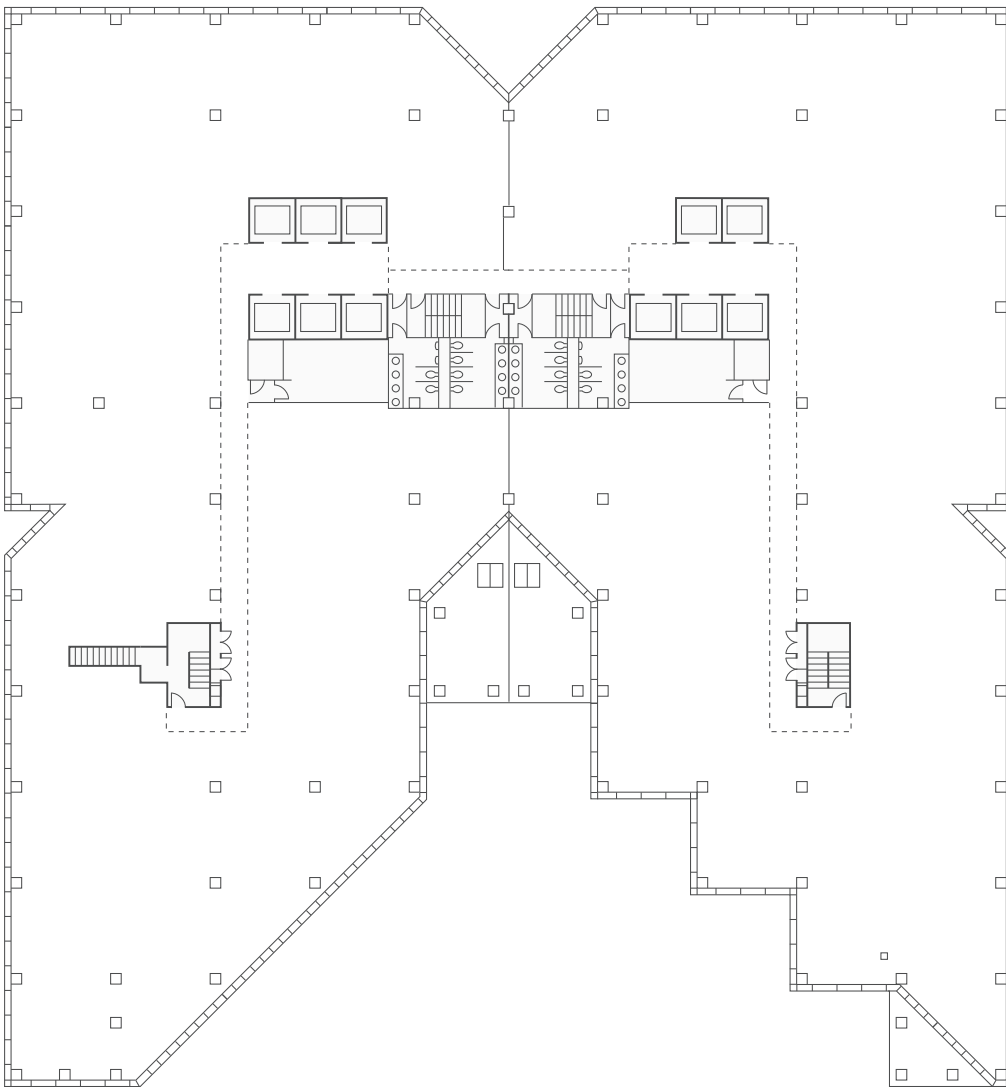
Property Group Partners
1101 New York Avenue Floor 9
Washington DC
20006-3717

T 202 470-4900
F 202 470-4889

1981 McGill College Avenue

Typical Floor

35,454 SF



Property Group Partners
609 Fifth Avenue Floor 6
New York, New York
10017-1021

T 202 490-2626
F 202 490-1060

Property Group Partners
1101 New York Avenue Floor 9
Washington DC
20006-3717

T 202 470-4900
F 202 470-4889