



## The Gateway to Palm Beach

With its striking, iconic architecture and unparalleled executive amenities, CityPlace Tower has become the new benchmark for premium office space in Florida.

Located at 525 Okeechobee Blvd., this 18-story tower is the first Class-A office building to be built in West Palm Beach in nearly 20 years, and features:

- Covered Access to the Shops & Restaurants of CityPlace
- Flexible and Efficient Floor Plans
- Exclusive, Executive Parking with Direct-To-Suite Access
- Hurricane-Resistant Design & Highest Quality Construction
- Private Valet and Concierge Services
- Full-Service Banking Branch, Drive-Thru and ATM







## Design Features

- 100% Generator Backup System Assures Uninterrupted Power During the Event of a Utility Power Loss
- LEED Silver Certified with Centralized Recycling System and Green Landscaping
- Spectacular Ocean, Intracoastal Waterway and City Views
- Windows are 5/8" Laminated Glass for Impact Resistance
- Parking Garage Includes Electronic Vehicle Charging Stations
- State of the Art Security System

## Amenities

- 24-Hour Access Control with Card Readers and Full-Service Concierge and Security Team
- Executive Parking with Private Elevator Access, Valet, Dry Cleaning, and Car Detailing Services Located On-site
- Four Levels Of Secured, Covered, Integrated Parking
- Full-Service Banking Branch, Drive-Thru Teller and ATM
- Direct, Covered Access to More Than 100 Shops and Restaurants





CITYPLACE  
TOWER

For Leasing Information  
[CityPlaceTower.com](http://CityPlaceTower.com)

## CityPlace

One of the most inspired and admired downtown centers in the nation, CityPlace's imaginative architecture, public plazas and destination restaurants and shopping have made it a signature of Palm Beach County.

The open air, Italian-inspired, 72-acre property offers more than 100 shopping, dining and entertainment options for people of all ages and tastes.







## Key Tenants

The 300,000 SF Cityplace Tower is Currently 95% Occupied with the Most Prestigious Tenant Roster in Palm Beach County. Notable Tenants Include:

- Shutts & Bowen LLP
- Carlton Fields Jordan Burt
- Regions Bank
- Cleveland Clinic Florida
- UBS

## Awards

Building of the Year 2009  
**NAIOP**

Outstanding Building of the Year 2013  
**BOMA Ft. Lauderdale + Palm Beaches TOBY**



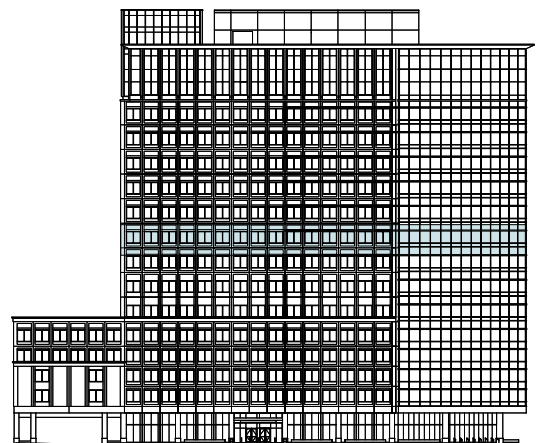
## Floor 08



## Suite 800

**TOTAL SPACE**  
11,837 RSF

**HIGHLIGHTS**  
LEED Silver Certified  
100% Generator Backup System  
Impact Resistant Windows  
State-of-the-Art Security System  
4 Levels of Secure Parking





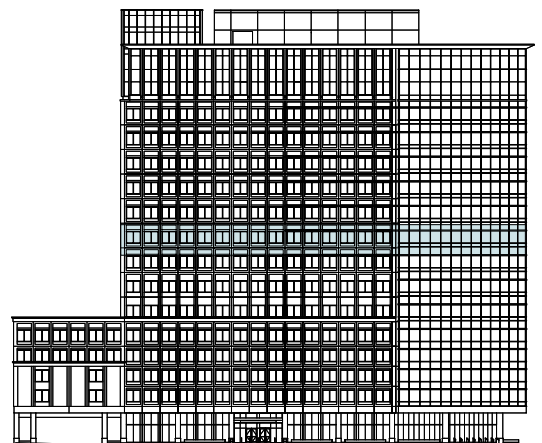
## Floor 12



## Suite 1250

**TOTAL SPACE**  
5,002 RSF

**HIGHLIGHTS**  
LEED Silver Certified  
100% Generator Backup System  
Impact Resistant Windows  
State-of-the-Art Security System  
4 Levels of Secure Parking







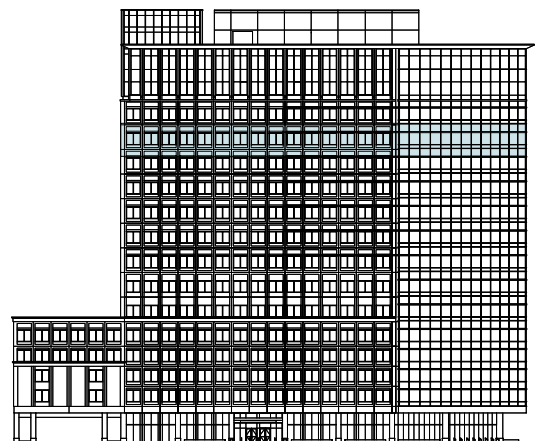
## Floor 16



## Suite 1670

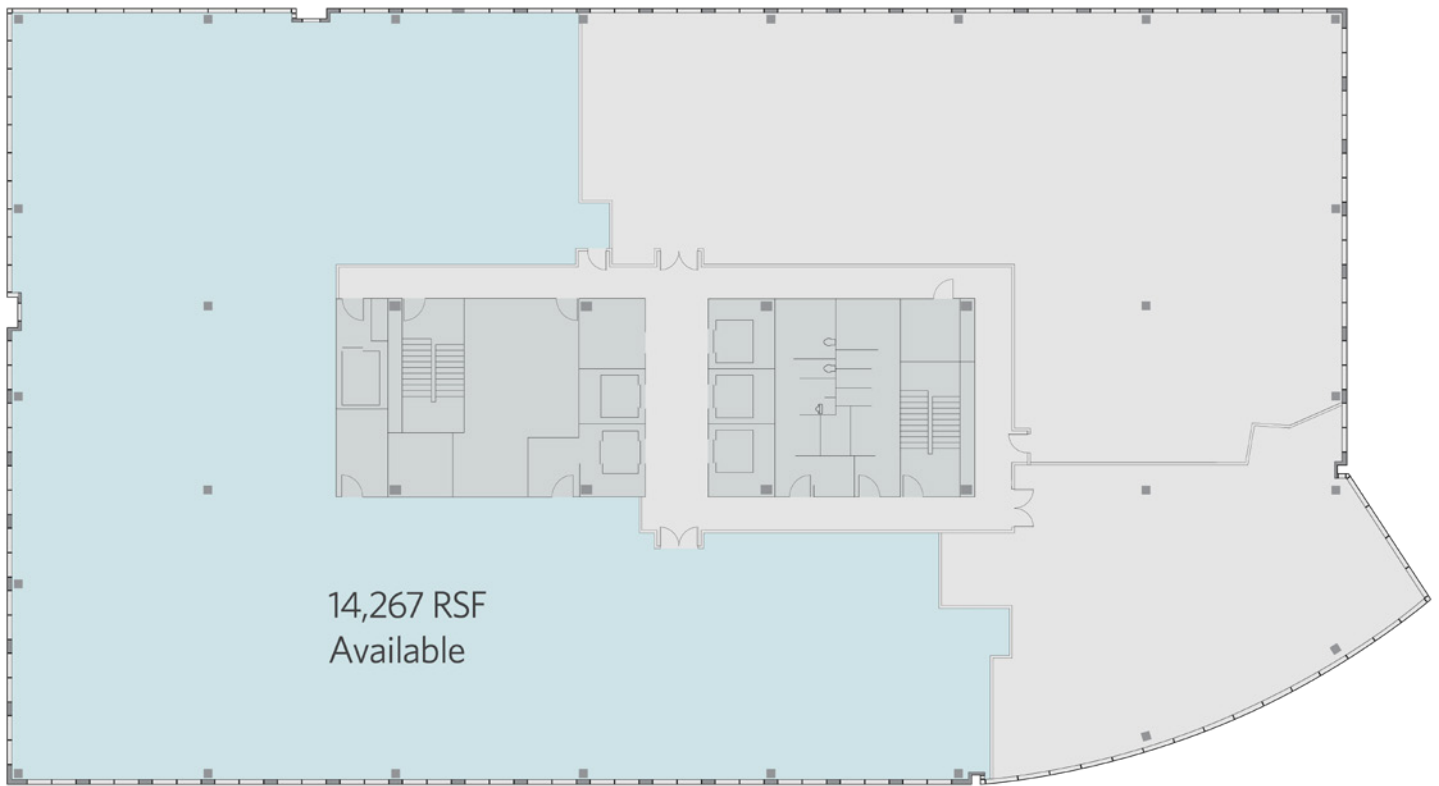
**TOTAL SPACE**  
4,604 RSF

**HIGHLIGHTS**  
LEED Silver Certified  
100% Generator Backup System  
Impact Resistant Windows  
State-of-the-Art Security System  
4 Levels of Secure Parking





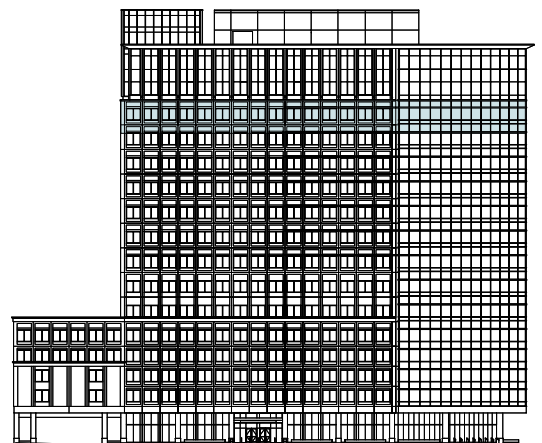
## Floor 17



## Suite 1750

**TOTAL SPACE**  
14,267 RSF

**HIGHLIGHTS**  
LEED Silver Certified  
100% Generator Backup System  
Impact Resistant Windows  
State-of-the-Art Security System  
4 Levels of Secure Parking







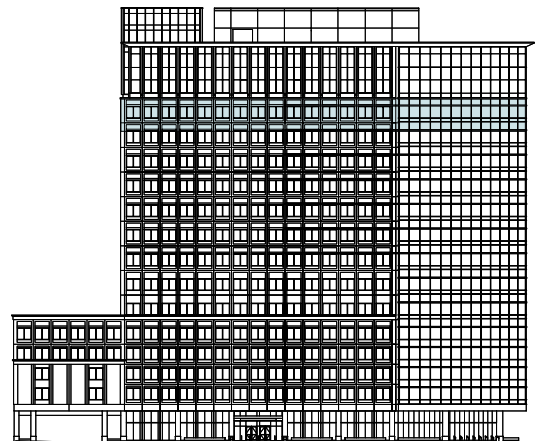
## Floor 17



## Suite 1770

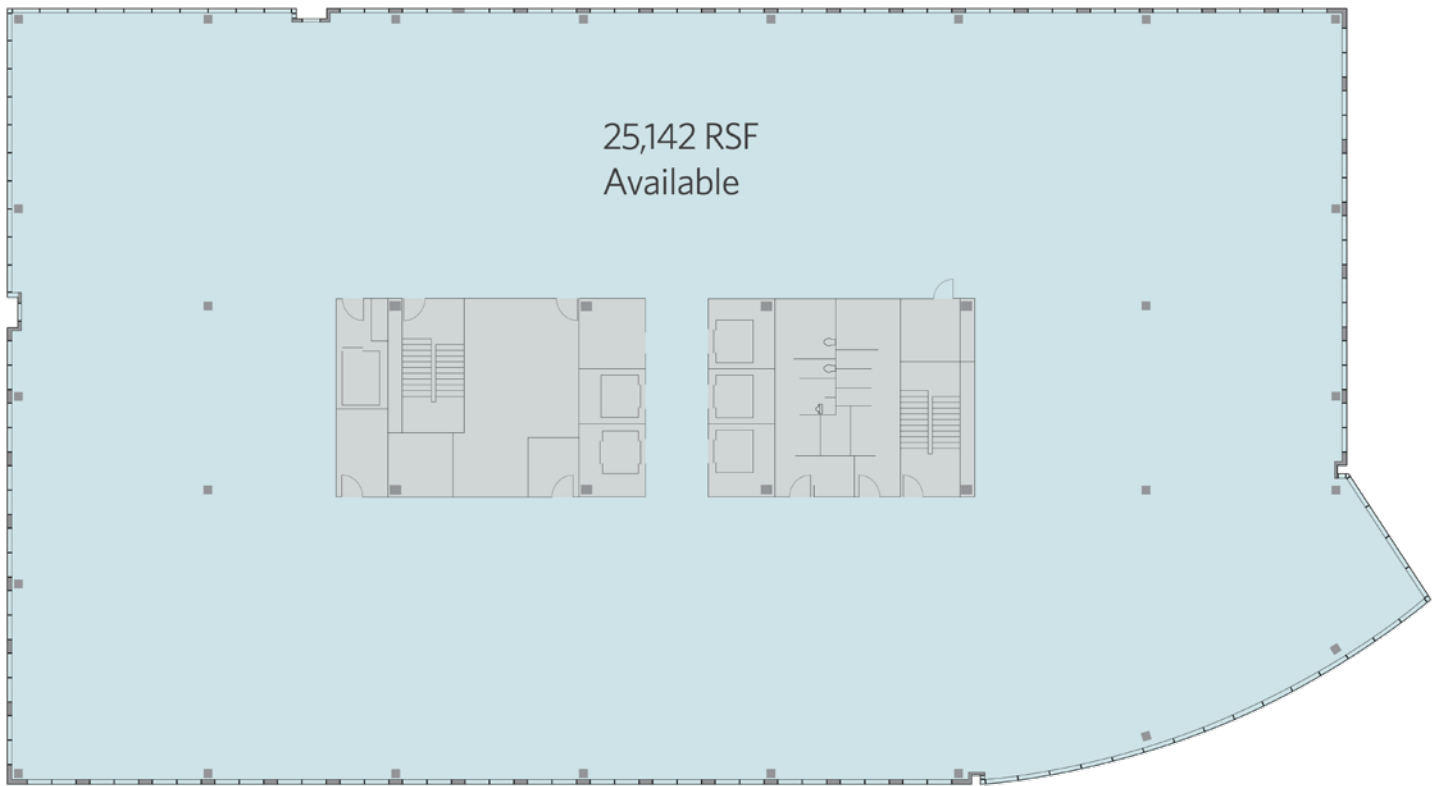
**TOTAL SPACE**  
3,585 RSF

**HIGHLIGHTS**  
LEED Silver Certified  
100% Generator Backup System  
Impact Resistant Windows  
State-of-the-Art Security System  
4 Levels of Secure Parking





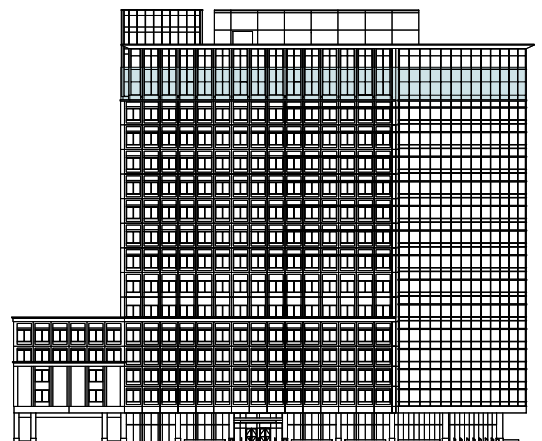
## Floor 18



## Suite 1800

**TOTAL SPACE**  
25,142 RSF

**HIGHLIGHTS**  
LEED Silver Certified  
100% Generator Backup System  
Impact Resistant Windows  
State-of-the-Art Security System  
4 Levels of Secure Parking







Entrance and Lobby



Security and Elevators





CITYPLACE  
TOWER

For Leasing Information  
[CityPlaceTower.com](http://CityPlaceTower.com)



Conference Room Overlooking Intracoastal Waterway



East Parking Entrance





CITYPLACE  
TOWER

For Leasing Information  
[CityPlaceTower.com](http://CityPlaceTower.com)

## Join Us at CityPlace Tower

CityPlace Tower offers full-floor, multi-floor and spec suite spaces, with each full-floor plate approximately 26,000 square feet. Smaller offices start at 2,390 square feet, or move-in ready offices ranging from 1,600 square feet to 3,255 square feet.

### Leasing Information

Property Group Partners  
525 Okeechobee Boulevard  
Suite 120  
West Palm Beach, FL 33401

T 561 650-0900  
F 561 650-0939

